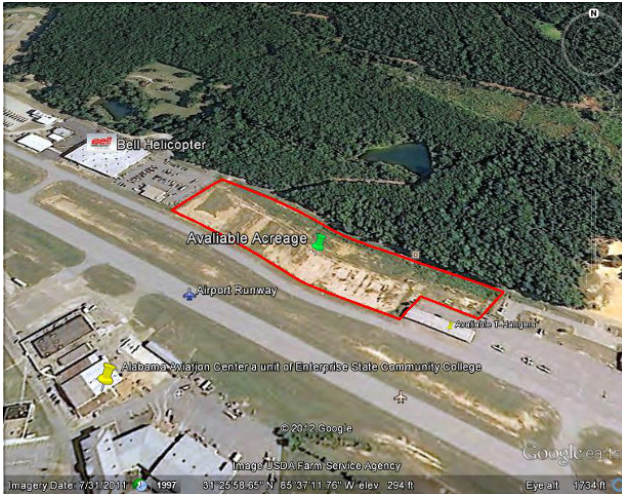


Site Profile

Alabama Site Selection Database

Airport Site - Ozark

City: Ozark County: Dale
 Micropolitan Area: Enterprise-Ozark



General Site Data	
Total Acres	18
Available Acres	18
Additional Available	
Largest Tract	7
Smallest Tract	3
Protective Covenants	
Phase 1 Environmental	Yes
Preliminary Geotechnical:	Yes
Topography	Rolling
Preliminary Wetlands Assessment:	Yes
Ecological Review:	Yes
Cultural Resources Review:	Yes
Zoning	Light Industrial
Previous Use	Agriculture
Previous Use Description	Business and Commercial

Site Id: 2579	
Street Address	1537 South Union Ave.
Nearest City	Ozark
Within City Limits	Yes
Zip Code	36361
Latitude	31.4296
Longitude	-85.6183
Located in Industrial Park	Yes
Park Name	
Within Enterprise Zone	No
Within Favored Geographic Area	
Within Renewal Community	

Utilities	
Natural Gas	Provider: SE Alabama Gas District Status: Existing Connection Size of Main: 6 in. Main PSI:
Water	Provider: Ozark Utility Board Status: Existing Connection Size of Main: 6 in.
Sewer	Provider: Utility Board of Ozark Status: Existing Connection Size of Main: 8 in.
Electricity	Provider #1: Alabama Power Company Status: Existing Connection Service to Property: Yes (Distribution): Transmission: Yes Provider #2:
Telecommunications	Provider: CenturyLink Fiber Optics: Yes Redundancy: Yes xDSL Available: Yes

Transportation	
Rail Service	Provider: CSX Transportation Track Status: Not Specified Provider #2: Track Status: Not Specified
Navigable Waterway	Chattahoochee River Dock Facility: Port > 50 miles
Nearest Commercial Air City	Dothan, AL
Miles to Nearest Service:	15

Highways			
Highway Type	Highway Name	Miles to Access	Four Lane
Interstate	I-10	52.0	
Interstate	I-85	84.0	
Federal Highway	231	0.0	Yes
Alabama Highway	123	0.0	Yes

Price	
Sale Price	\$12,000.00 per acre
Land Lease Rate (Annual)	
Negotiable?	Yes
Date Quoted	Nov 26, 2013
Price Comments	

Site Profile

Alabama Site Selection Database

Airport Site - Ozark

City: Ozark County: Dale
Micropolitan Area: Enterprise-Ozark

General Comments

FTZ subzone available. Price is negotiable based on job creation and capital investment.

Site information is current as of 11/26/13

Site Profile

Alabama Site Selection Database

Airport Site - Ozark

City: Ozark County: Dale
Micropolitan Area: Enterprise-Ozark



This information has been secured from sources we believe to be reliable; however, we make no representation or warranties, expressed or implied, as to the accuracy of the information.

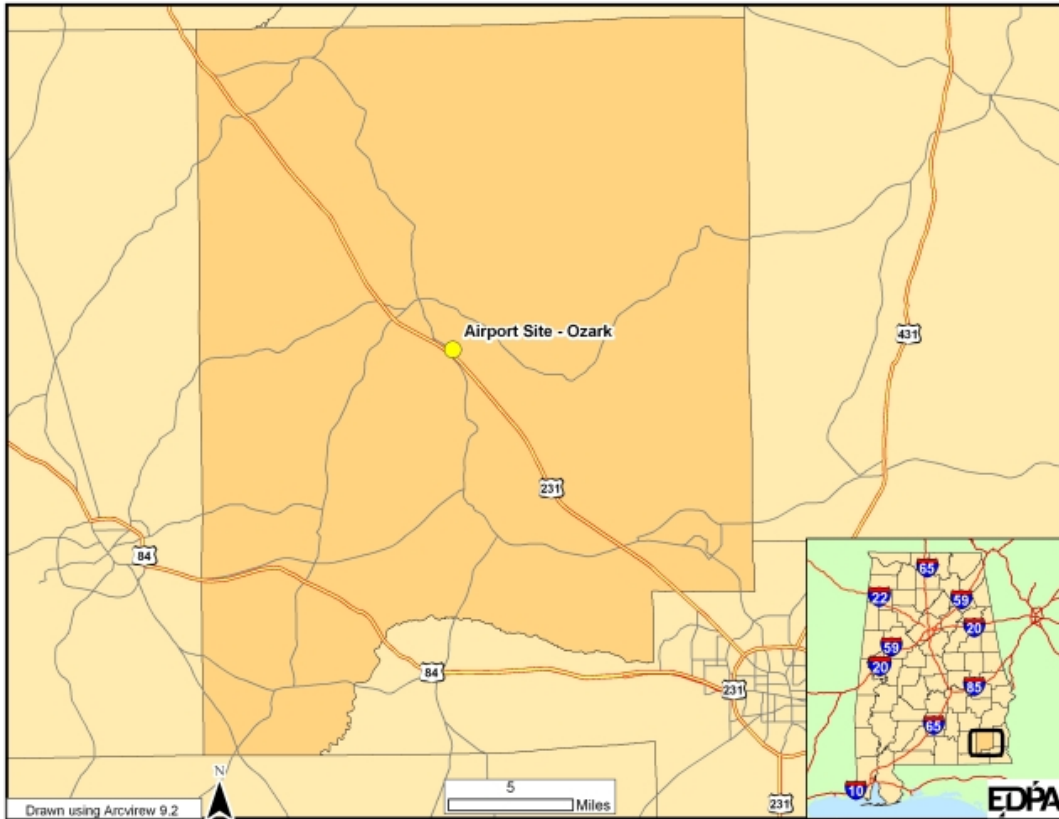
Economic Development Partnership of Alabama
www.edpa.org

Site Profile

Alabama Site Selection Database

Airport Site - Ozark

City: Ozark County: Dale
Micropolitan Area: Enterprise-Ozark



This information has been secured from sources we believe to be reliable; however, we make no representation or warranties, expressed or implied, as to the accuracy of the information.

Economic Development Partnership of Alabama
www.edpa.org